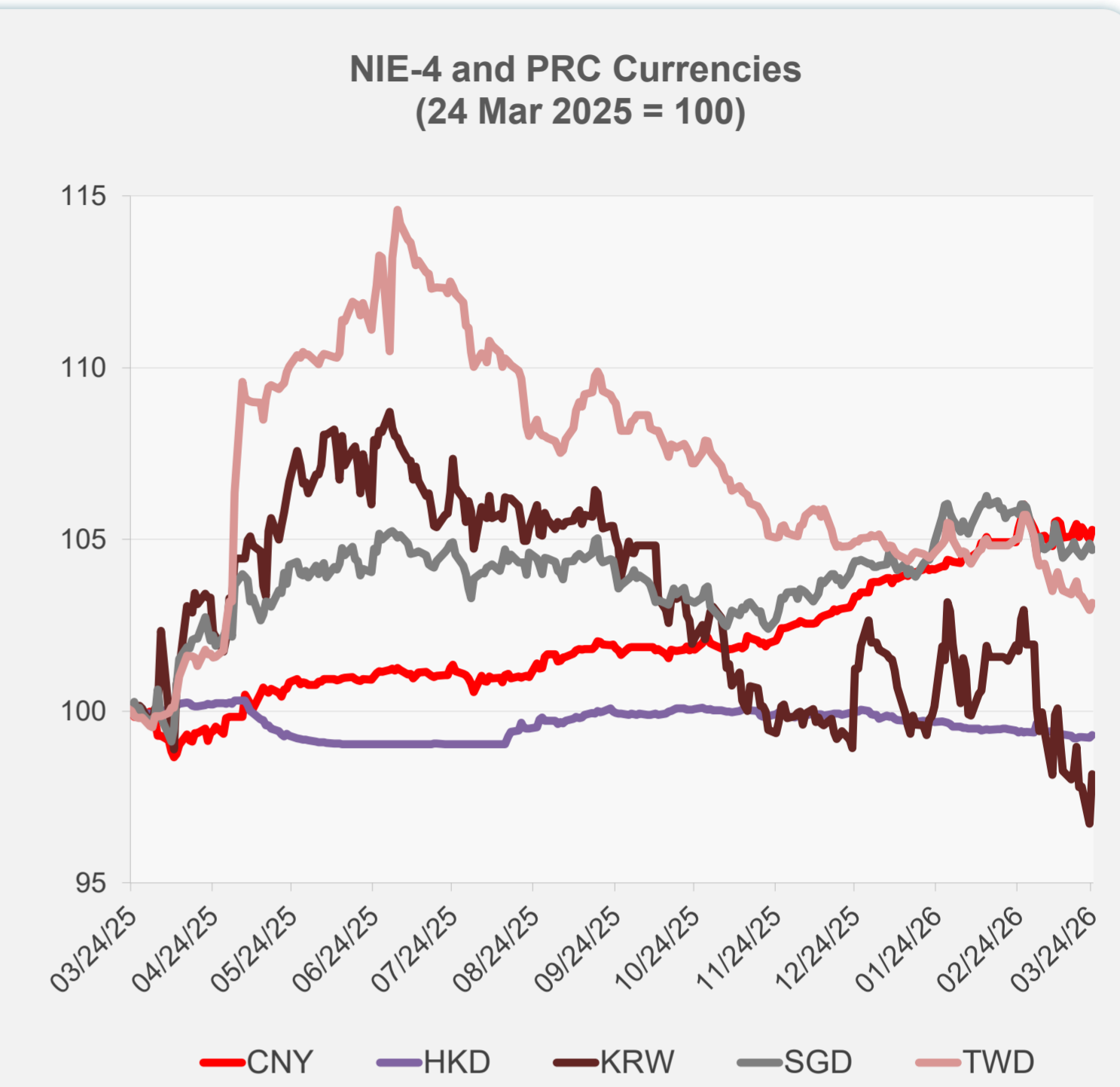
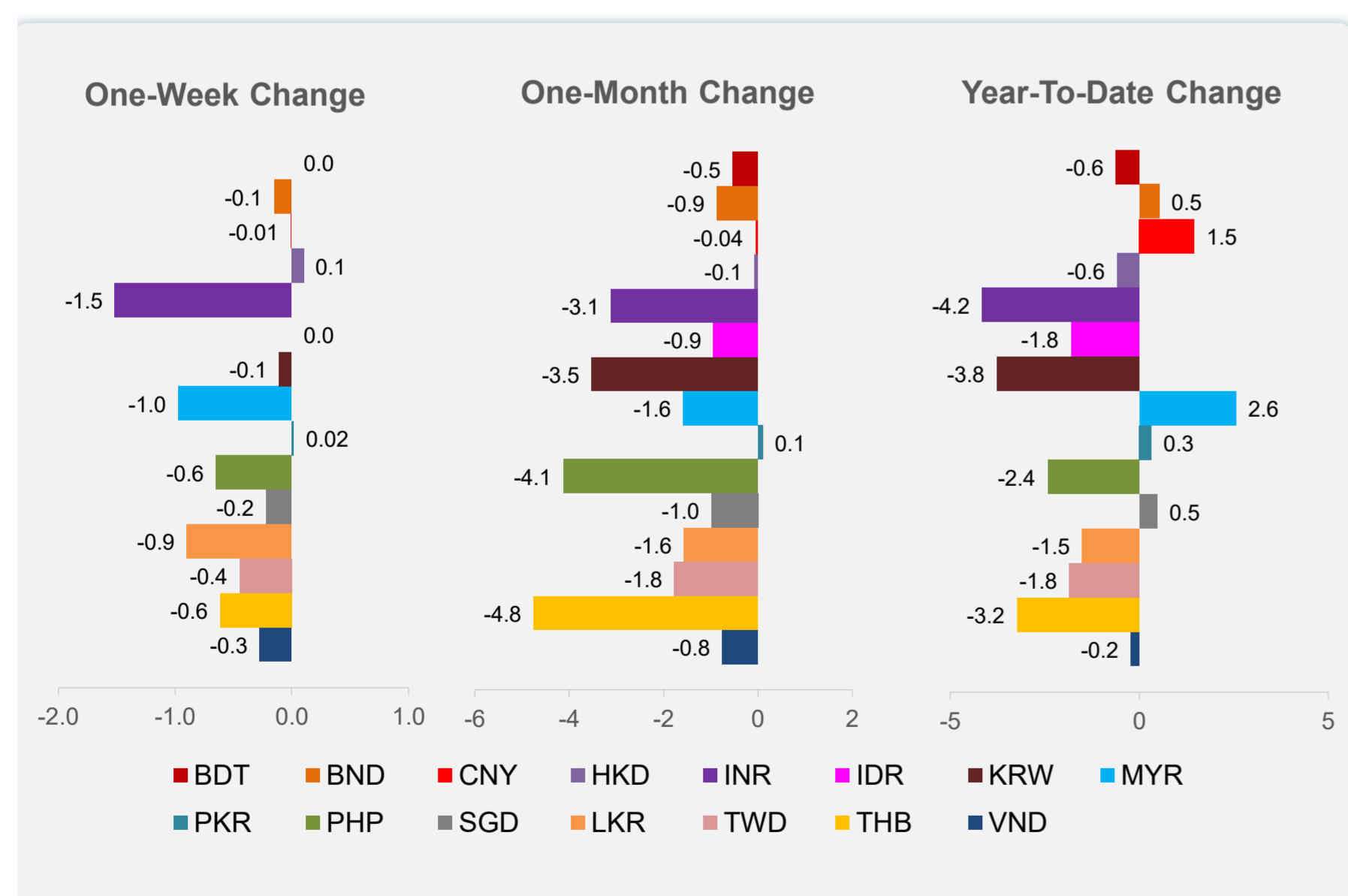
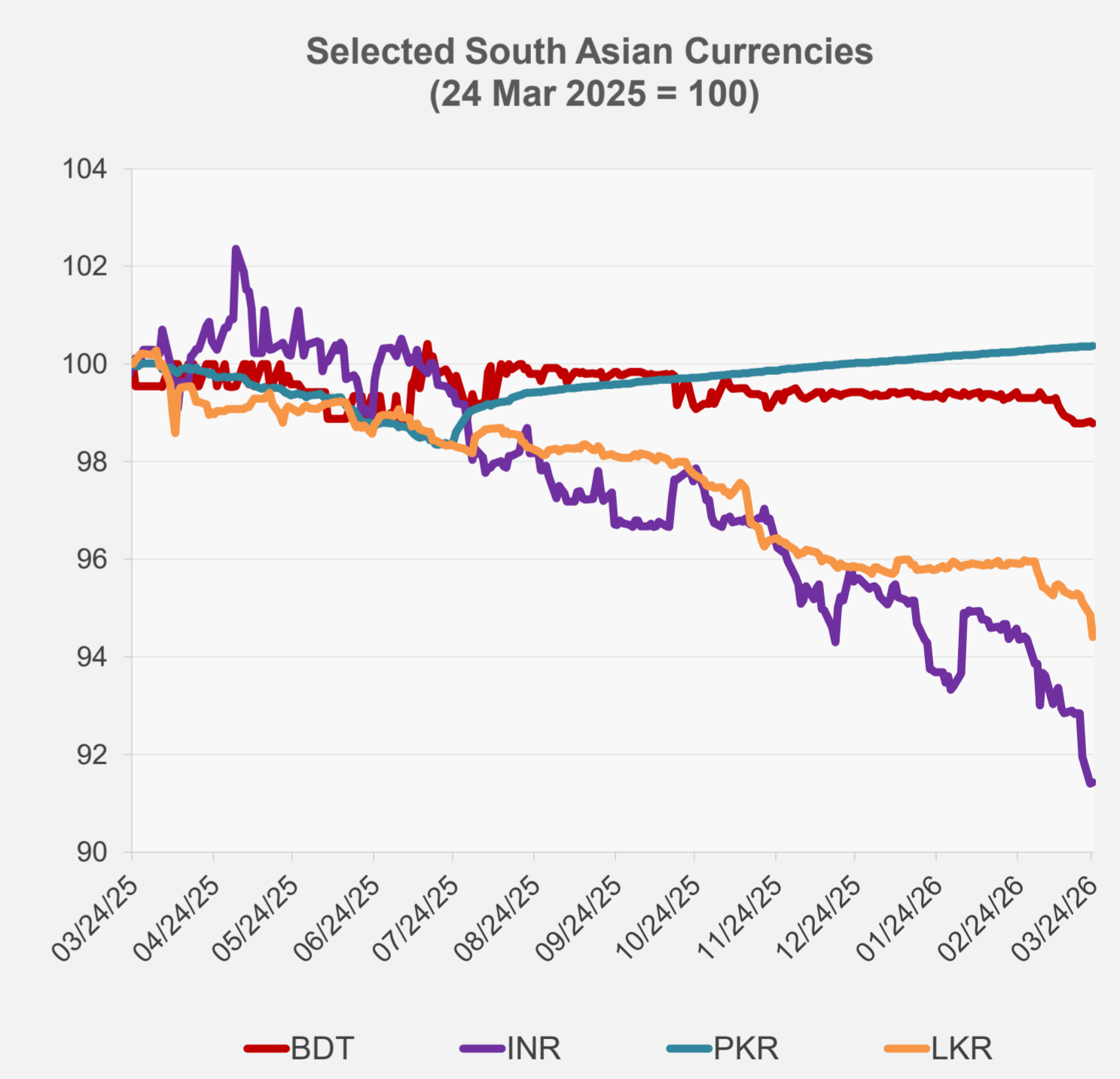
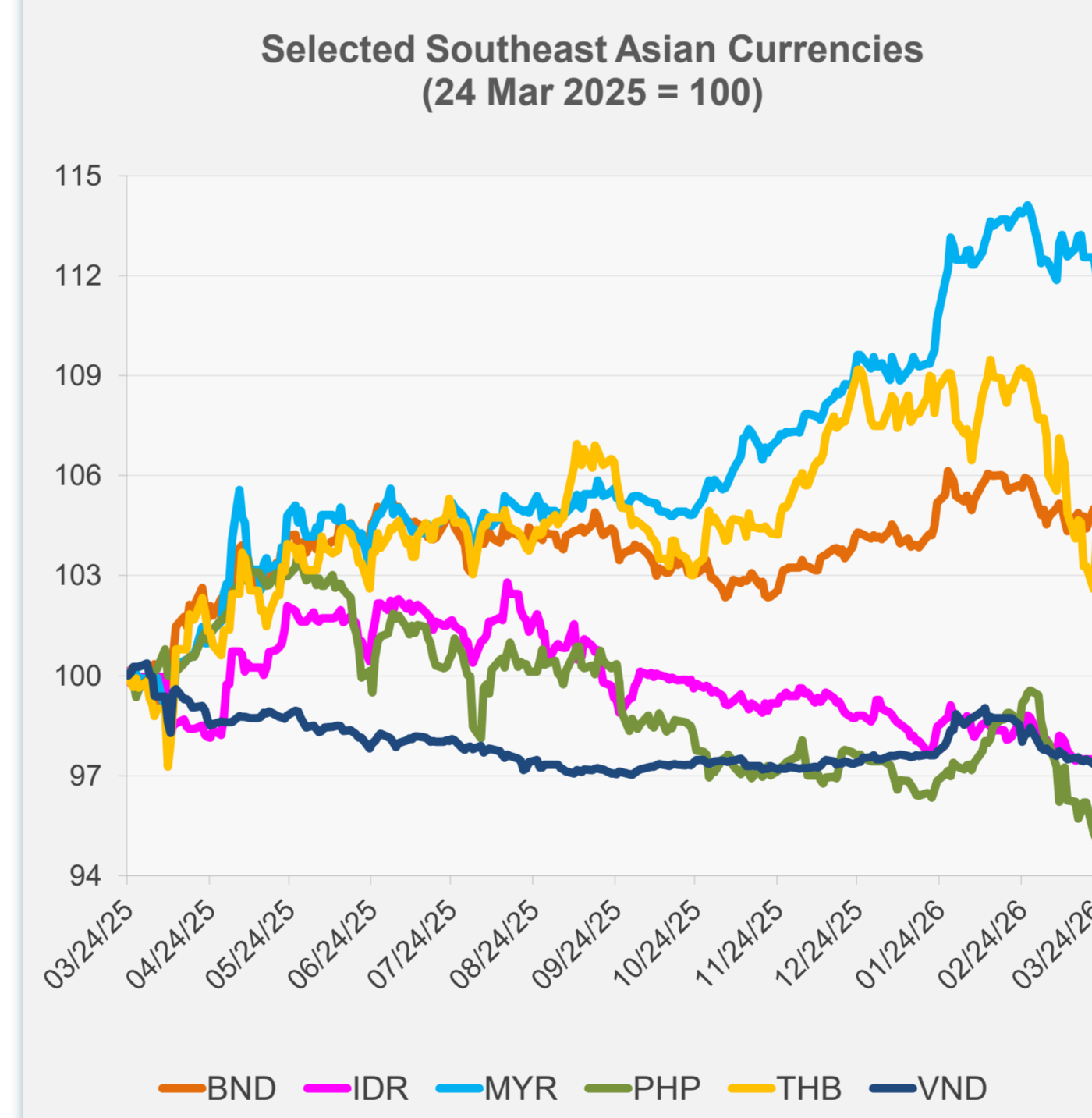


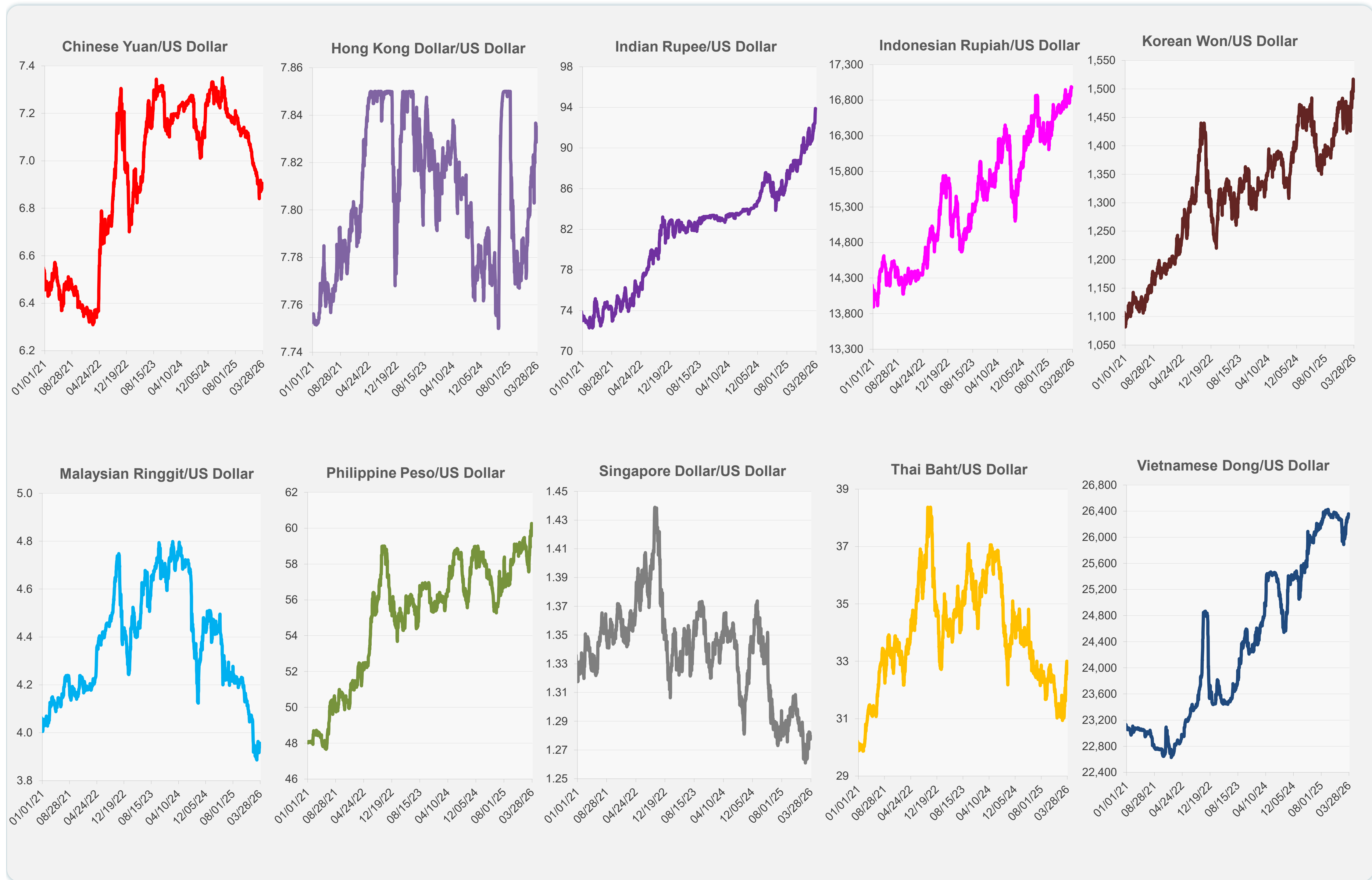
	Latest Closing	% change from Previous Day	% change from 01-Jan-26
Euro	0.86	-0.06	-1.42
Japanese yen (JPY)	158.50	0.69	-1.59
Bangladeshi taka (BDT)	123.00	-0.04	-0.61
Brunei dollar (BND)	1.28	-0.27	0.53
Chinese yuan (CNY)	6.89	0.26	1.46
Hong Kong dollar (HKD)	7.83	0.08	-0.58
Indian rupee (INR)	93.88	0.02	-4.15
Indonesian rupiah (IDR)	16,980.00	0.00	-1.80
Korean won (KRW)	1,495.20	1.48	-3.76
Malaysian ringgit (MYR)	3.96	-0.43	2.57
Pakistan rupee (PKR)	279.20	0.00	0.32
Philippine peso (PHP)	60.26	-0.22	-2.42
Singapore dollar (SGD)	1.28	-0.19	0.48
Sri Lanka rupee (LKR)	314.33	-0.49	-1.50
Taipei,China NT dollar (TWD)	32.03	0.20	-1.84
Thai baht (THB)	32.56	1.38	-3.23
Vietnamese dong (VND)	26,357.00	-0.08	-0.22



NIE = Newly Industrialized Economies



Note: Negative/Decreasing values indicate depreciation of local currency, and positive/increasing values indicate appreciation.
Source: ADB calculations using data from Bloomberg and Haver Analytics.

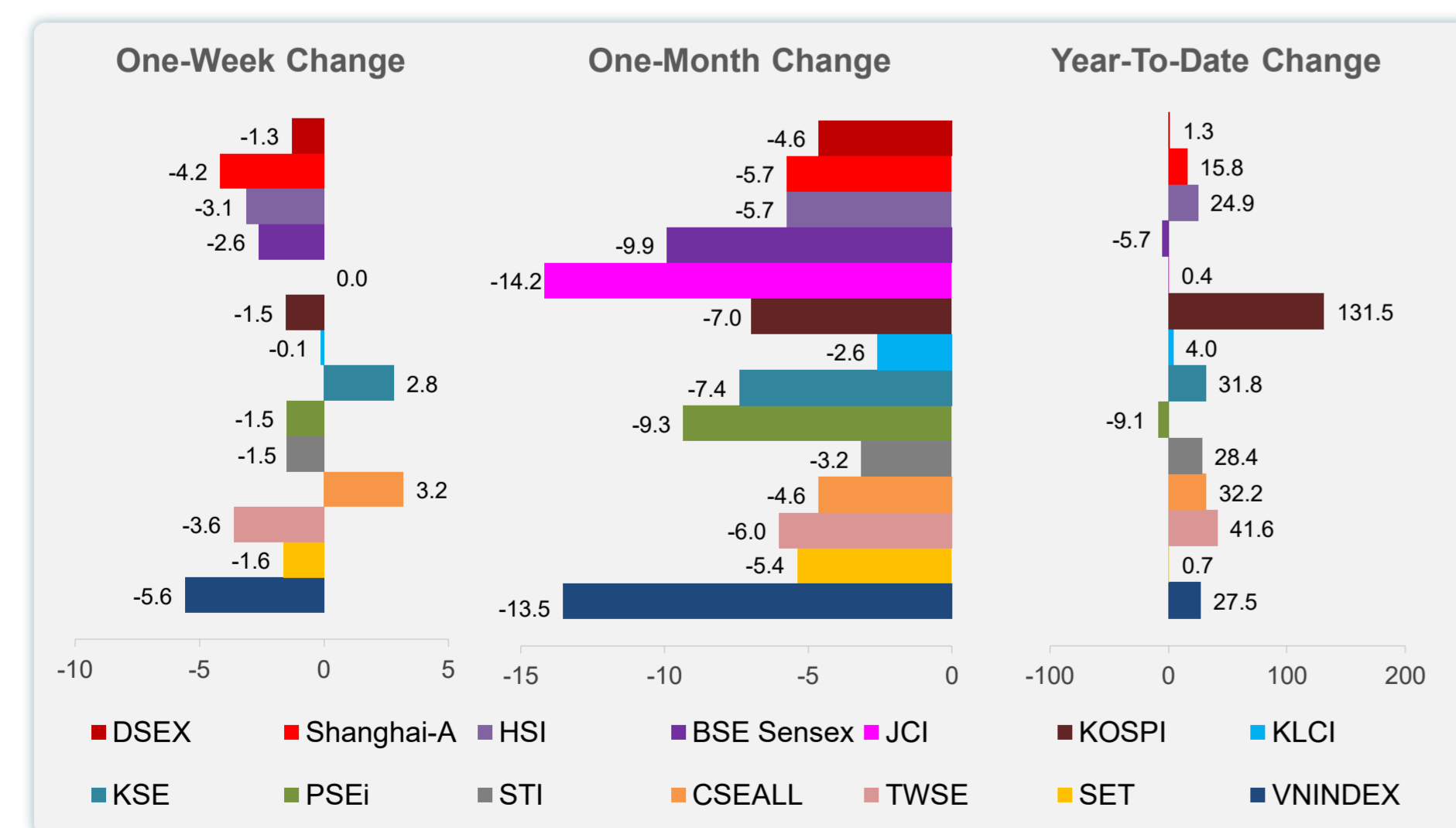
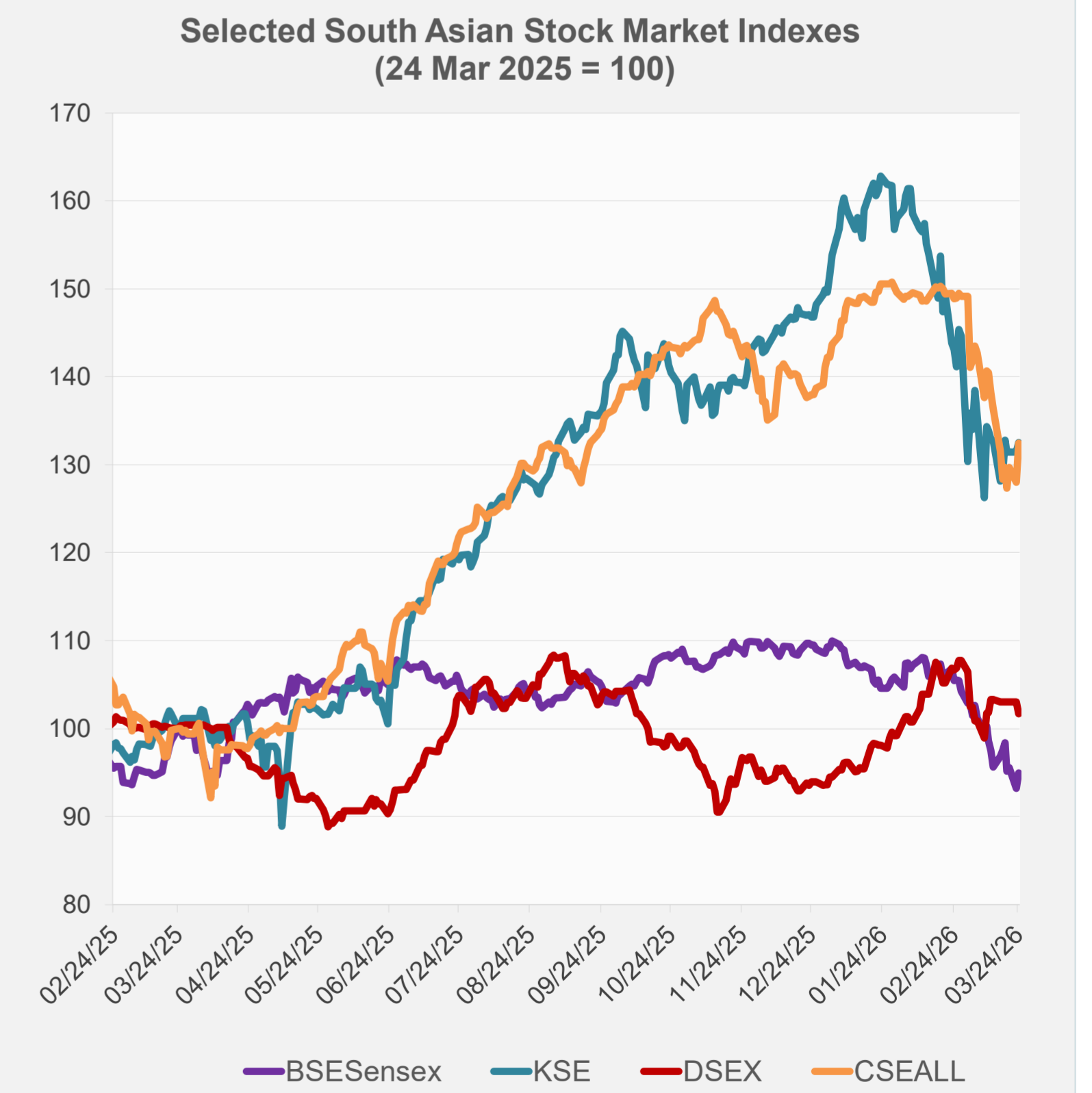
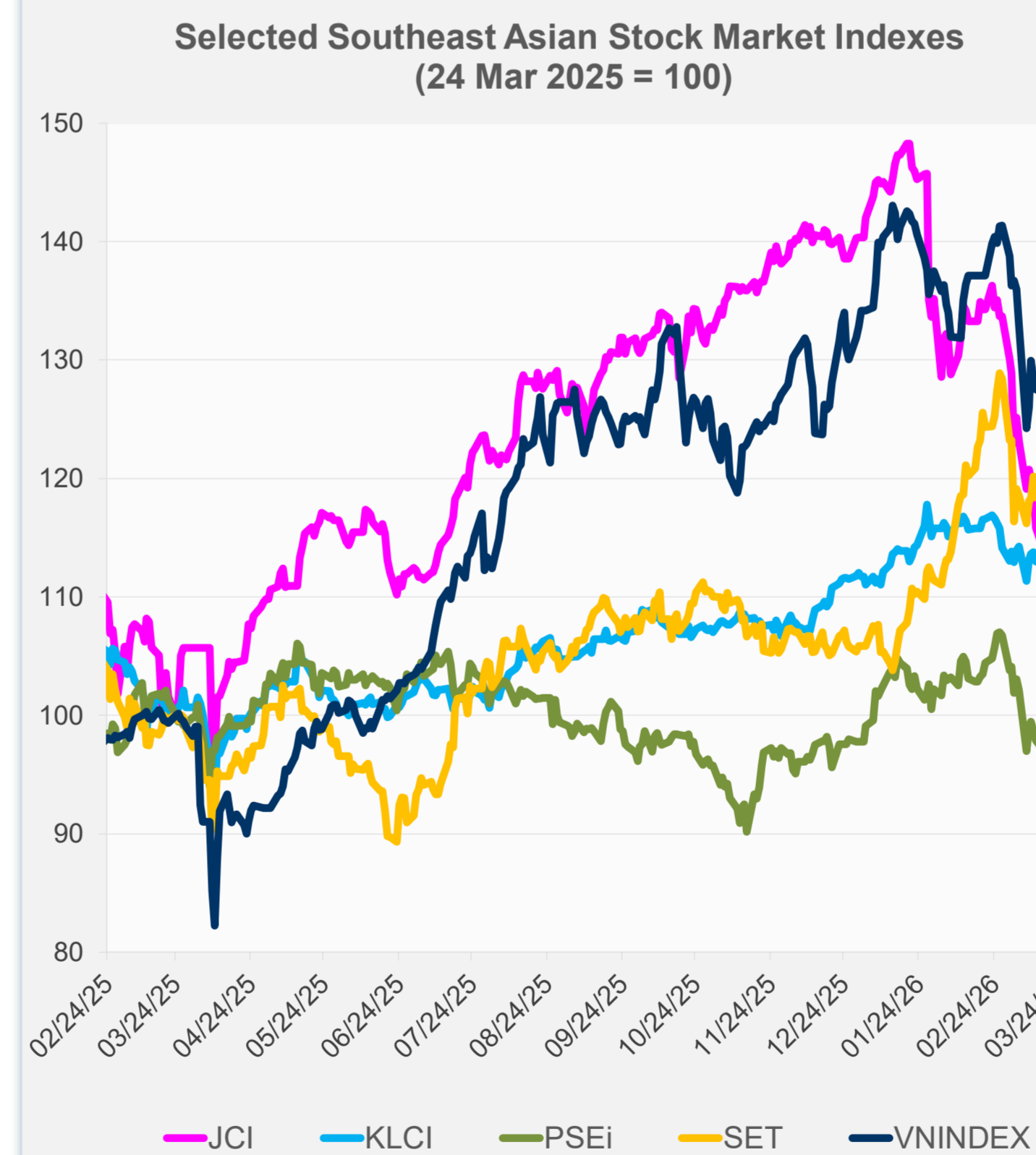
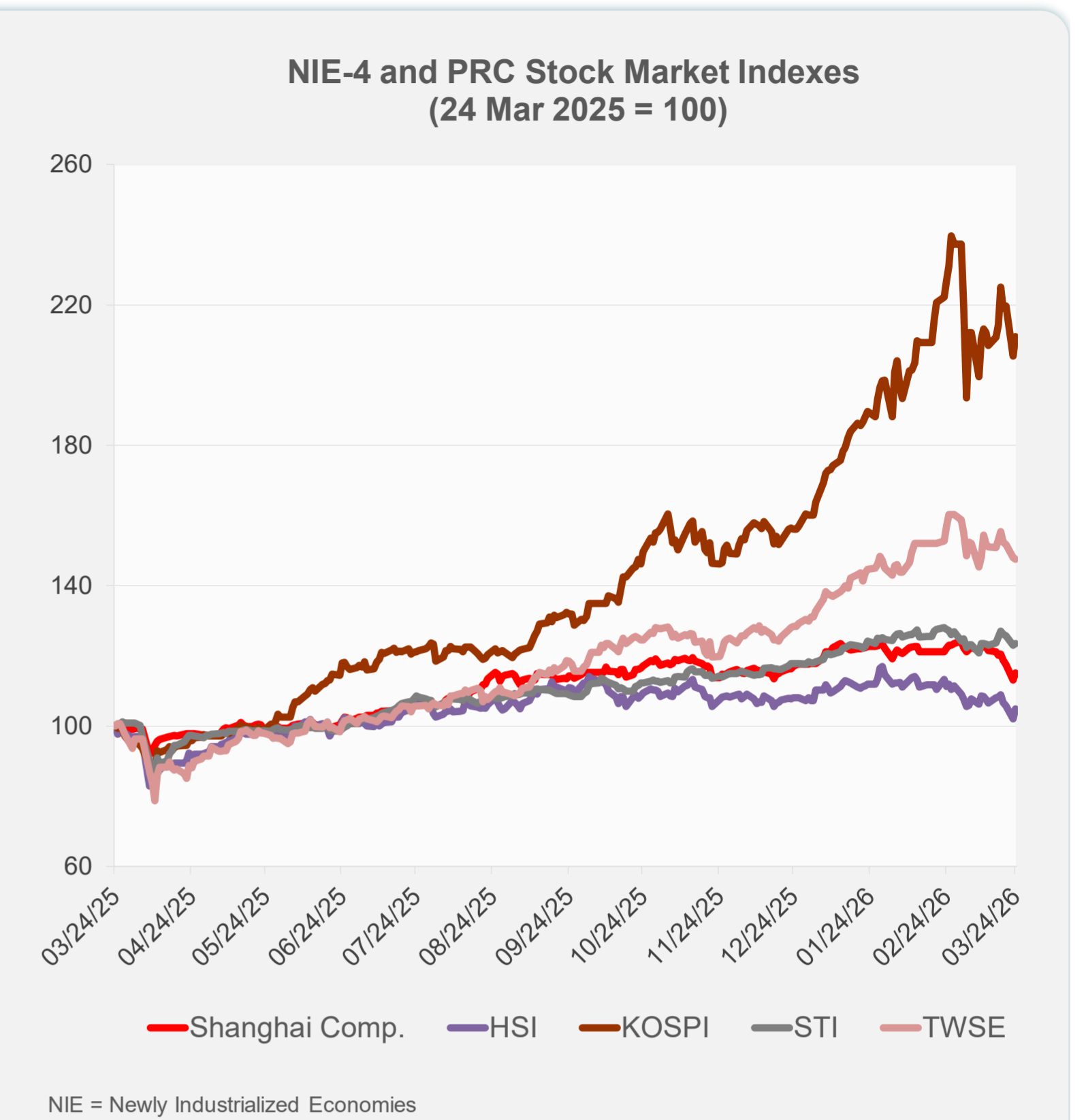
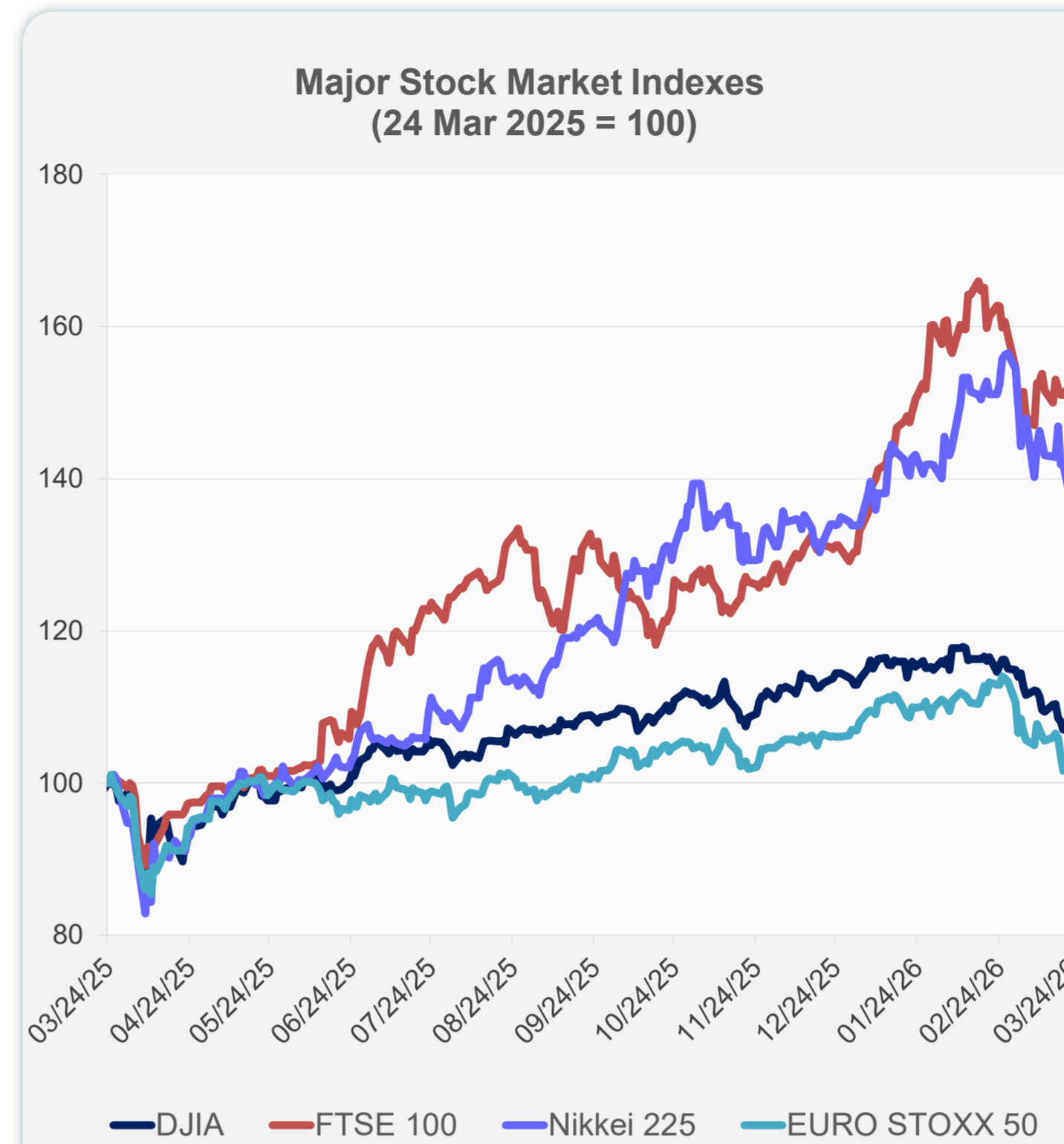


Source: Haver Analytics.

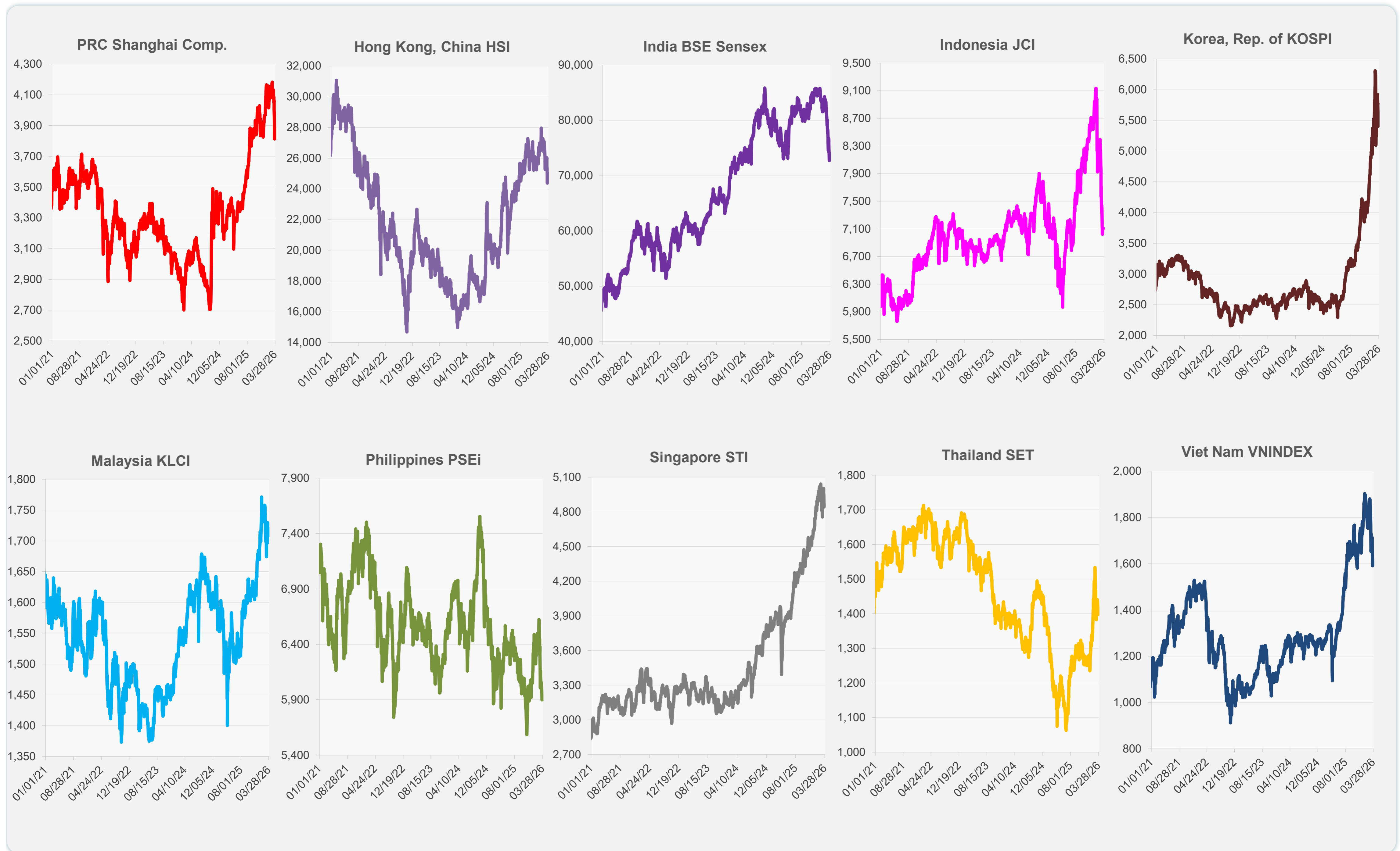
Daily Market Watch STOCK INDEXES

25 March 2026, 9:00 AM Manila

	Latest Closing	% change from Previous Day	% change from 01-Jan-25
US Dow Jones Ind Avg	46,124.06	-0.18	8.41
US NASDAQ	21,761.89	-0.84	12.69
US S&P 500	6,556.37	-0.37	11.47
UK FTSE 100	12,930.16	-1.81	58.21
EURO STOXX 50	5,581.29	0.13	14.00
Japan NIKKEI 225	52,252.28	1.43	30.98
Bangladesh DSEX	5,284.97	-1.29	1.28
PRC Shanghai Comp.	3,881.28	1.78	15.80
Hong Kong, China HSI	25,063.71	2.79	24.94
India BSE Sensex	74,068.45	1.89	-5.65
Indonesia JCI	7,106.84	0.00	0.38
Korea, Rep. of KOSPI	5,553.92	2.74	131.46
Malaysia KLCI	1,708.76	-0.69	4.04
Pakistan KSE 100	154,274.90	0.78	31.85
Philippines PSEi	5,936.20	0.63	-9.08
Singapore STI	4,862.43	0.44	28.38
Sri Lanka CSEALL	21,071.23	3.47	32.15
Taipei, China TWSE	32,612.24	-0.34	41.58
Thailand SET	1,410.39	0.93	0.73
Viet Nam VNINDEX	1,614.77	1.48	27.47



Sources: ADB calculations using data from Bloomberg and CEIC Data Company.



Sources: ADB calculations using data from Bloomberg and CEIC Data Company.

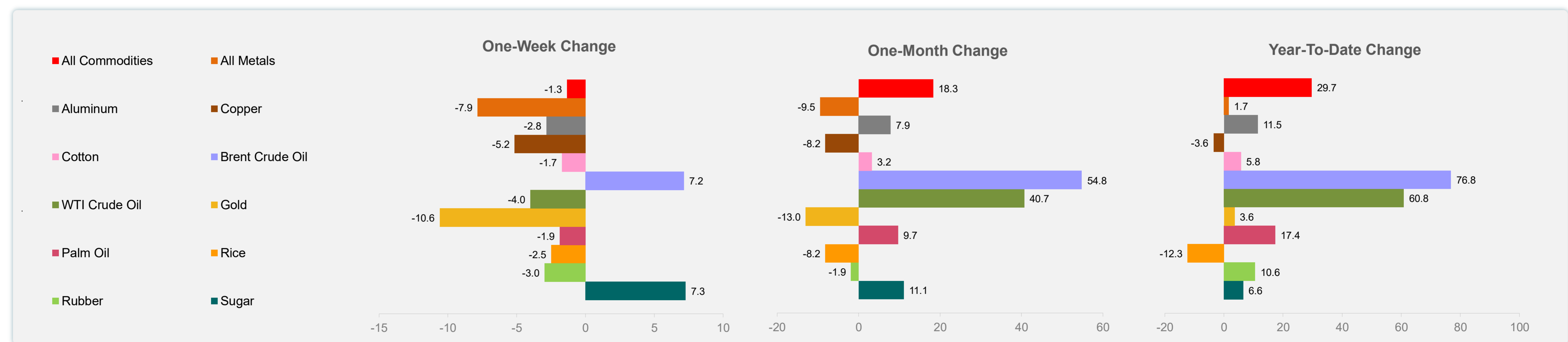
Daily Market Watch
COMMODITY PRICES

25 March 2026, 9:00 AM Manila

	Unit	Latest Closing	% change from Previous Day	% change from 01-Jan-26
S&P All Commodities	US\$	711.34	2.49	29.68
S&P All Metals	US\$	451.14	0.11	1.66
Aluminum	US\$/metric ton	3,307.87	2.42	11.45
Copper	US\$/metric ton	12,008.77	-0.60	-3.57
Cotton	US cents/lb	65.62	0.68	5.80
Brent Crude Oil	US\$/barrel	110.42	0.48	76.82
WTI Crude Oil	US\$/barrel	92.35	4.79	60.83
Gold	US\$/troy oz	4,475.51	1.55	3.61
Palm Oil	US\$/metric tonne	1,136.88	-0.78	17.37
Rice ¹	US\$/metric ton	391.00	0.00	-12.33
Rubber ²	US\$/kg	237.70	-1.08	10.56
Sugar	US cents/lb	15.76	0.00	6.56

¹ Latest closing price from 18 March 2025.

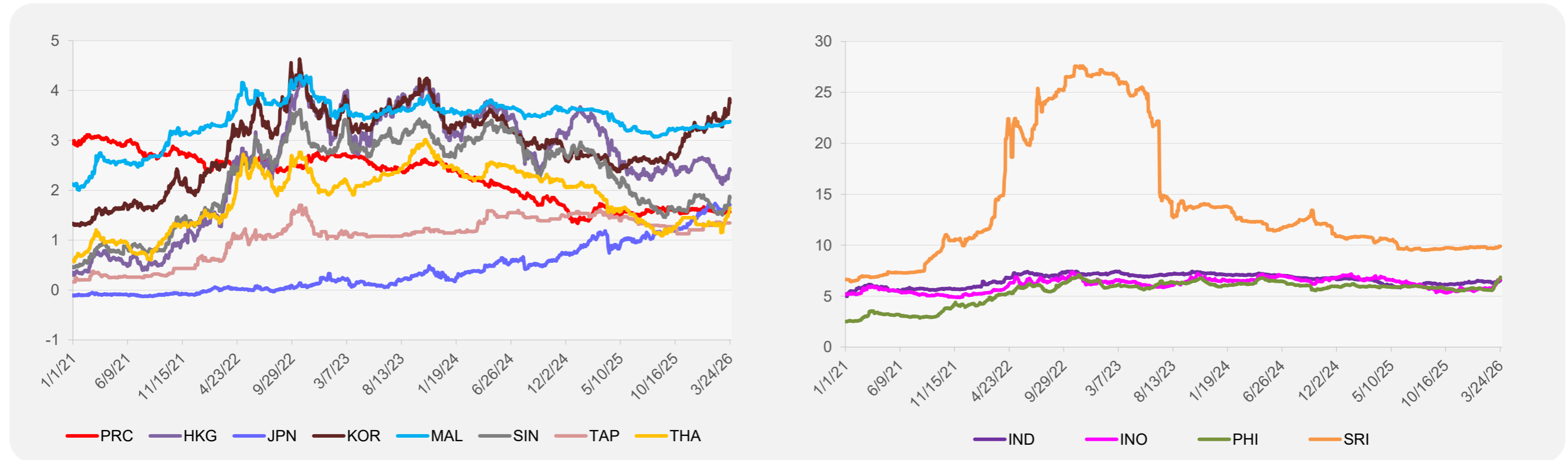
² Singapore Exchange, Ribbed Smoked Sheet Rubber.



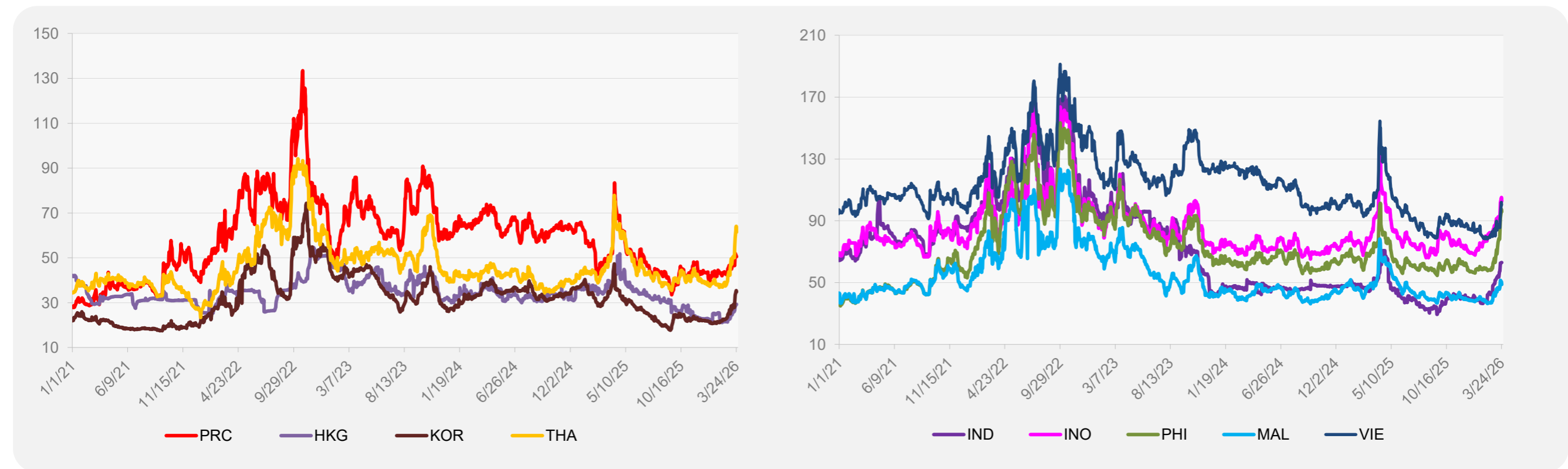
Source: ADB calculations using data from Bloomberg.

ASIA REGIONAL INTEGRATION CENTER
 Regional Cooperation and Integration Division (ERIC)
 Economic Research and Development Impact Department (ERDI)

5-YEAR LOCAL CURRENCY GOVERNMENT BOND YIELDS (%)



5-YEAR CREDIT DEFAULT SWAP¹



¹ In USD and based on sovereign bonds.
Source: ADB calculations using data from Bloomberg.